

GATE OPERATOR

**BIG**

**40QI**

**230 V**

Up to  
4000 kg

Speed up to  
18 m/min



**P-500BIG40QI**

230 V three-phase sliding gate operator with built-in control unit with inverter. Max. gate weight 4000 kg.



**Accessories for  
BIG series**  
Page 50



**Further accessories:**  
Transmitters page 238  
Photocells page 243  
Flashing lights  
page 246

## FEATURES:

- commercial use
- for gates up to 4000 kg
- three-phase 230 V operator
- mono-phase 230 V power supply
- soft start and soft stop
- adjustable opening and closing speed of the control unit and inverter
- oil bath vertical pinion operator
- painted steel housing
- manual release mechanism
- mechanical clutch for crush prevention
- available upon request with pinion for M6 rack

## PROS:

- suitable for large sliding gates
- higher torque and power thanks to the inverter technology
- self-ventilated operator to increase the working cycle
- metal and bronze gears to increase endurance and reduce noise



### GEARMOTOR

Thanks to the oil bath gearbox, the three-phase ventilated gearmotor guarantees intensive and long-lasting use.



### UNLOCK

Thanks to the industrial mechanical key, the unlocking maneuver is always feasible even for particularly heavy gates.



### ELECTRONICS

The control unit with inverter allows to vary the speed and to program the acceleration and deceleration ramps.



### LIMIT SWITCHES

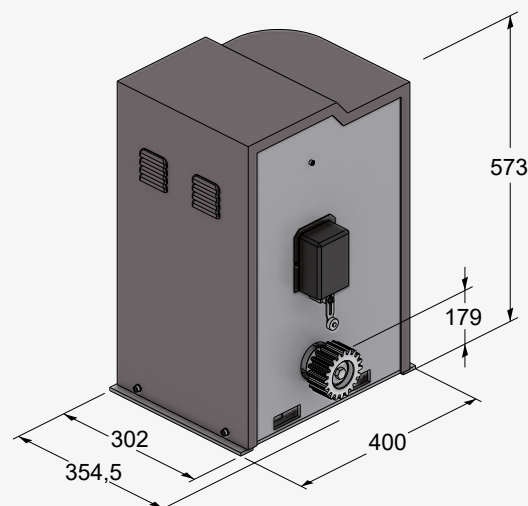
The industrial limit switches, adjustable in height, is suitable for working with any type of rack.

## TECHNICAL DRAWINGS

### Technical features

### BIG40QI

Power supply	230 V AC (50 - 60 Hz)
Motor power supply	230 V AC
Open circuit voltage	3,6 A
Power rating	1500 W
Max. operating speed	adjustable 7 ÷ 18 m/min
Duty cycle	100 %
Operating temperature	-20° C ÷ +55° C
Motor thermal protection	150° C
Degree of protection	IP 54
Max. gate leaf weight	4000 kg
Max. weight cantilever gate leaf	2800 kg
Pinion module	4
Electronic control unit	D820M



# ACCESSORIES

## BIG SERIES ACCESSORIES



**K-400CP25**  
Counterplate for P-500BIG25QI



**K-400CP30**  
Counterplate for P-500BIG40QI



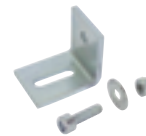
**M-ING0MSTZ12** NEW  
Pinion module 6 (P-500BIG25QI)



**M-ING0000Z12BIG**  
Pinion module 6 (P-500BIG40QI)



**P-550CFZ06**  
Steel rack 30x30 (Module 6, max 4000 kg) 2 meter sections. Pack of 10 m



**P-400CFZ22**  
Steel rack 22x22 (Module 4, max 3000 kg) 2 meter sections. Pack of 4 m

**P-400VSF20**  
Screws and brackets for P-400CFZ22 (40 units per pkg)



**P-400PROFC**  
Galvanized rack attachment profile. 2 meter sections. Compatible with P-400CFZ22



**P-700BAP4**  
Gate stopper with spring



**P-900TWM**  
Master receiver for central interface (manages up to max. 4 TWCs).



**P-900BSD15**  
Deformable safety edge kit  $l = 1,5$  m



**P-900TWC**  
Battery-powered wireless slave transmitter for mobile/fixed sensitive edge (manages up to max. 2 sensitive edges per TWC).

**P-900BSD18**  
Deformable safety edge kit  $l = 1,8$  m

**P-900BSD20**  
Deformable safety edge kit  $l = 2$  m

**P-900BSD25**  
Deformable safety edge kit  $l = 2,5$  m



**P-250RXSM2B**  
Self-learning outdoor radio receiver, 433.92 MHz, two-channel, universal, to be wired with cable (14 code memory)



**P-250SM126**  
Memory card for 126 radio codes



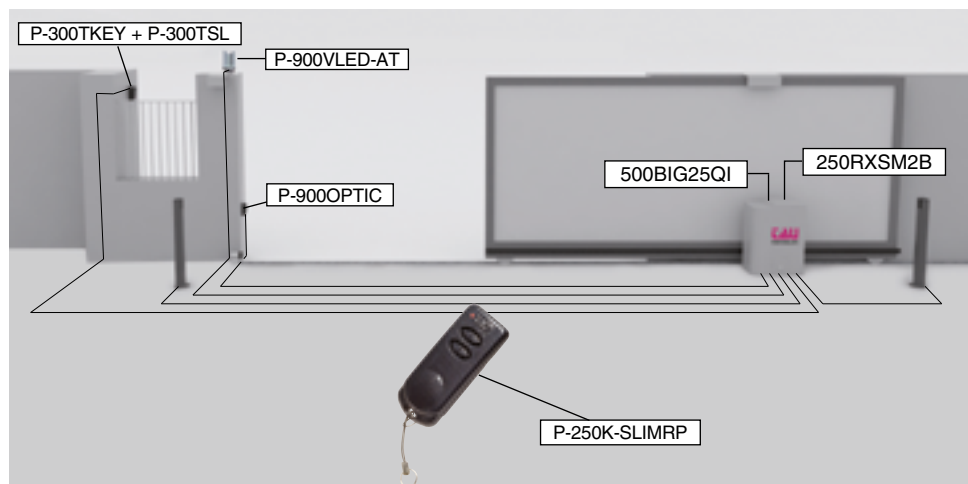
**P-900VLED-AT**  
230 V AC white led flashing light

**P-900VLED-ATO**  
230 V AC orange led flashing light

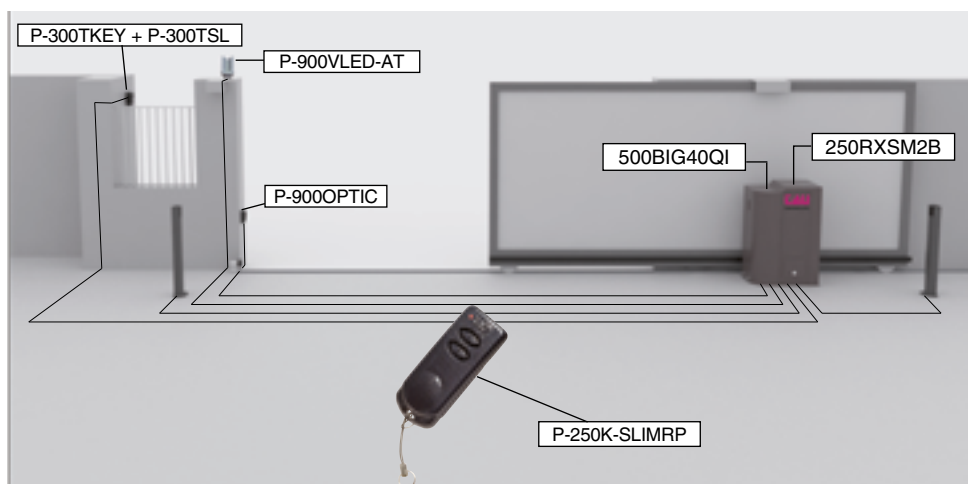


**C-CRT**  
Warning signal

## P-500BIG25QI TYPICAL SYSTEM



## P-500BIG40QI TYPICAL SYSTEM



## CHAIN VERSION

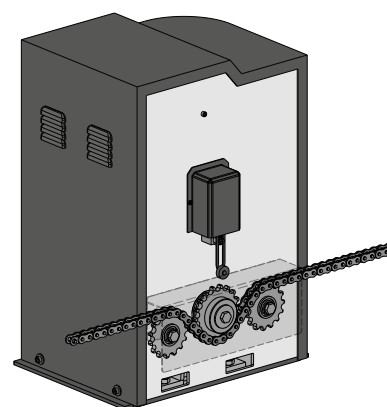
Upon request, the MASTER gearmotor is available with the pinion for chain transmission.

## 120 VOLT VERSION



AVAILABLE

Upon request, the BIG gearmotor is also available in the 120 Volt version for foreign markets



## Use and maintenance manuals



BIG



D820M