

10 20 30 40 50



P-850MRC10

10 N m tubular gearmotor complete with support and Ø 60 mm adapter.

P-850MRC20

20 N m tubular gearmotor complete with support and Ø 60 mm adapter.

P-850MRC30

30 N m tubular gearmotor complete with support and Ø 60 mm adapter.

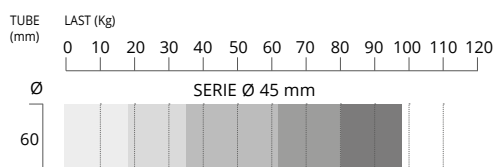
P-850MRC40

40 N m tubular gearmotor complete with support and Ø 60 mm adapter.

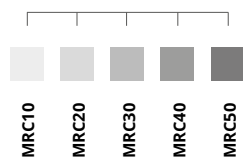
P-850MRC50

50 N m tubular gearmotor complete with support and Ø 60 mm adapter.

Application chart for rolling shutters



References



Materials

Materials	kg/m ²
PVC	5
Wood	10
Insulated aluminium	4
Extruded aluminium	8
Insulated steel	10
Armour-plated steel	16



MADE IN ITALY

FEATURES:

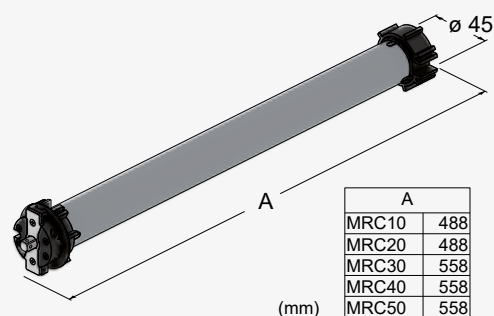
- tubular motor Ø 45 mm
- 230 V - 50 Hz motor
- self-braking motor
- motor with limit switches

PROS:

- ideal even for existing shutters
- easy to install: just insert the gearmotor inside the rolling shutter tube

Technical features	MRC10	MRC20	MRC30	MRC40	MRC50
Degree of protection	IP 44				
Power supply	230 V AC (50 - 60 Hz)				
Absorption	0,63 A	0,92 A	1,1 A	1,3 A	1,4 A
Absorbed power	146 W	205 W	230 W	292 W	308 W
Crown speed	13 rpm	13 rpm	13 rpm	13 rpm	13 rpm
Lifting power	18 kg	38 kg	56 kg	76 kg	94 kg
Operating temperature	-10° C ÷ +60° C				
Operating time	4 min				
Torque	10 N m	20 N m	30 N m	40 N m	50 N m

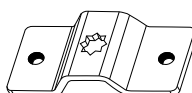
TECHNICAL DRAWINGS



ACCESSORIES



P-850AD60C
Ø 60 mm adapter for the rolling shutter tube (spare part)



P-850DZ68
Replacement bracket for tubular motors



P-850SF523
Adjustable bracket for MRC tubular motors



P-850CT60
Universal idler end cap for tube Ø 60 mm



P-850SF511
Bracket for MRC tubular motors



P-850BTOT607
Anti-lift stopper for octagonal tube 60 mm



P-850SF823
Click-in bracket for MRC tubular motors



P-750K330M
Electrical control unit for 1 motor for shutters or roller shutters with 433.92 MHz radio receiver and box